



**Dorset
Council**

Wildlife and Countryside Act 1981

**Dorset Council
County of Dorset Definitive Map and Statement of Rights of Way**

**Dorset Council (Footpaths at Home Plantation, Spetisbury)
Definitive Map and Statement Modification Order 2025**

This Order is made by Dorset Council under section 53(2)(b) of the Wildlife and Countryside Act 1981 ("the Act") because it appears to that authority that the County of Dorset Definitive Map and Statement require modification in consequence of the occurrence of an event specified in 53(3)(c)(i) namely, that rights of way which are not shown in the map and statement subsist or are reasonably alleged to subsist over land in the area to which the map relates and section 53(3)(c)(iii) namely that any other particulars contained in the map and statement require modification.

The authority has consulted with every local authority whose area includes the land to which the Order relates. Dorset Council hereby order that:

1. For the purposes of this Order the relevant date is 3 January 2025
2. The County of Dorset Definitive Map and Statement shall be modified as described in Part I and Part II of the Schedule and shown on the map attached to the Order.
3. This Order shall take effect on the date it is confirmed and may be cited as the "Dorset Council (Footpaths at Home Plantation, Spetisbury) Definitive Map and Statement Modification Order 2025".

Dated this 3rd day of JANUARY 2025

THE COMMON SEAL OF
DORSET COUNCIL
was fixed in the presence of:-

A handwritten signature in blue ink, appearing to read 'Jonathan Hill'.



Authorised Signatory

60/25

SCHEDULE

(The points specified relate to the map attached to the Order and their positions are identified by national grid references)

Part I

Modification of definitive map Description of paths to be added

A Footpath, Spetisbury:

To be numbered Footpath 30, Spetisbury

A-B-C From its junction with footpath E17/16 at point A (ST 90980225) heading north west along a grass surface on an initially enclosed route and continuing north west along a grass field strip with hedging to the eastern side and open field to the west to enter Home Plantation at point B (ST 90820247) and continuing in a west, north westerly direction to point C (ST 90730250). The width varies: 1.7 metres at point A (ST 90980225), continuing at 1.7 metres to point B (ST 90820247), widening to 4 metres at point C (ST 90730250).

A Footpath, Spetisbury:

To be numbered Footpath 31, Spetisbury

D-C-E-F From its junction with existing footpath E17/16 at point D (ST 90720242), at the southern boundary of Home Plantation heading north into Home Plantation and continuing north through the mature woodland on a compact earth surface passing point C (ST 90730250) and descending to the northern boundary of Home Plantation at point E (ST 90830277) where the route exits Home Plantation and enters open ground to join existing footpath E17/10 at point F (ST 90830279). The width varies: 2 metres at point D (ST 90720242), widening to 4 metres at point C (ST 90730250), widening to 5 metres at point E (ST 90830277) before meeting footpath E17/10 at point F (ST 90830279) on open ground.

Part II

Modification of definitive statement Variation of particulars of paths

Footpath 30, Spetisbury

Add:

From: ST 90980225 To: ST 90730250

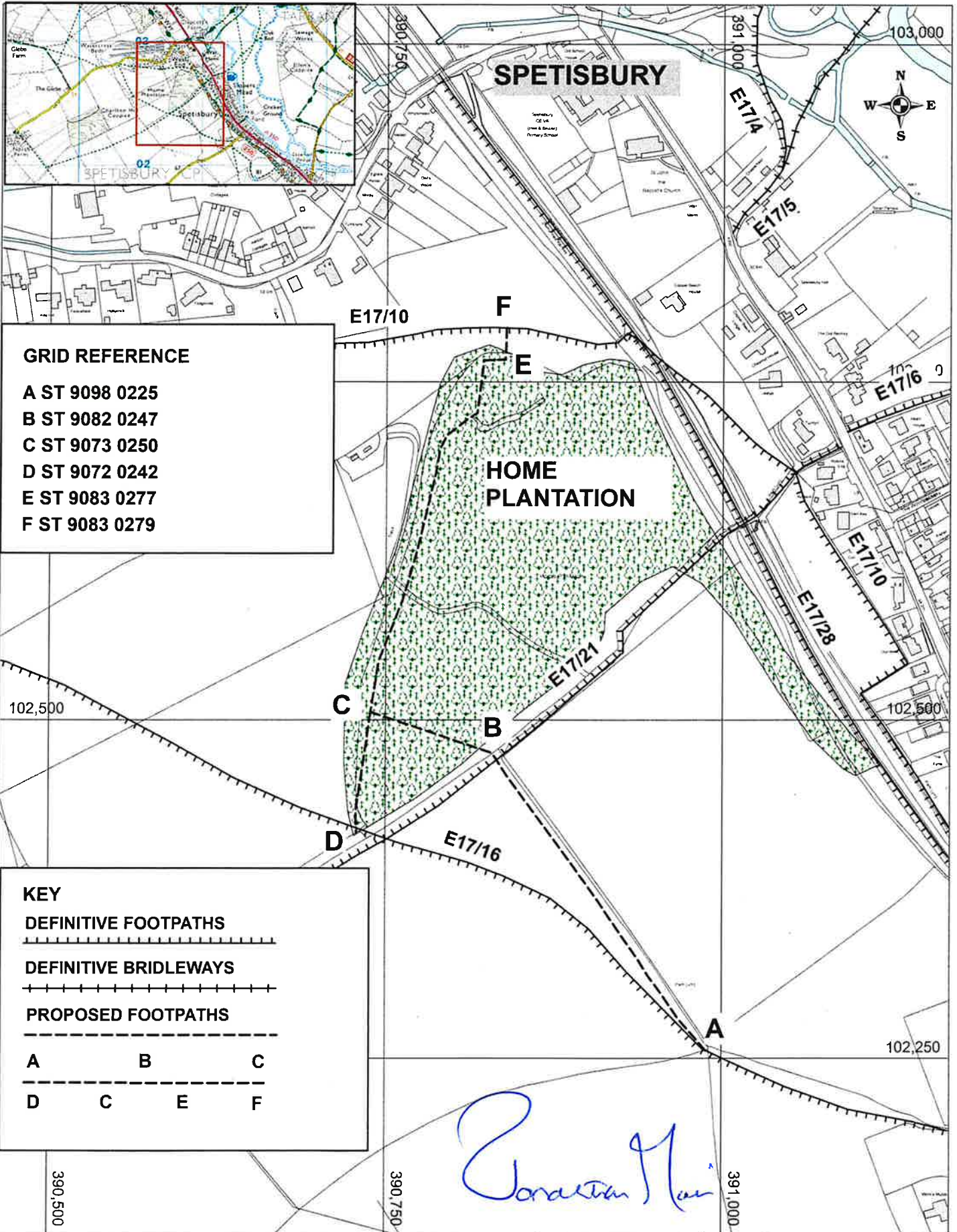
From its junction with footpath E17/16 at ST 90980225, heading north west along a grass surface on an initially enclosed route and continuing north west along a grass field strip with hedging to the eastern side and open field to the west to enter Home Plantation at ST 90820247 and continuing in a west, north westerly direction to ST 90730250. The width varies: 1.7 metres at ST 90980225, continuing at 1.7 metres to ST 90820247, widening to 4 metres at ST 90730250.

Footpath 31, Spetisbury

Add:

From: ST 90720242 To: ST 90830279

From its junction with existing footpath E17/16 at ST 90720242, at the southern boundary of Home Plantation heading north into Home Plantation and continuing north through the mature woodland on a compact earth surface passing ST 90730250 and descending to the northern boundary of Home Plantation at ST 90830277 where the route exits Home Plantation and enters open ground to join existing footpath E17/10 at ST 90830279. The width varies: 2 metres at ST 90720242, widening to 4 metres at ST 90730250, widening to 5 metres at ST 90830277 before meeting footpath E17/10 at ST 90830279 on open ground.



GRID REFERENCE

A ST 9098 0225
 B ST 9082 0247
 C ST 9073 0250
 D ST 9072 0242
 E ST 9083 0277
 F ST 9083 0279

KEY

DEFINITIVE FOOTPATHS

DEFINITIVE BRIDLEWAYS
 +-----+

PROPOSED FOOTPATHS
 - - - - -

A B C
 - - - - -
 D C E F

WILDLIFE AND COUNTRYSIDE ACT 1981

DORSET COUNCIL (FOOTPATHS AT HOME PLANTATION, SPETISBURY) DEFINITIVE MAP AND STATEMENT MODIFICATION ORDER 2025

Ref: T557/24/2
 Date: 21/01/2025
 Drawn by: SP
 Scae: 1:3.500 (at A4)
 Cent X: 390,816
 Cent Y: 102,574

Dorset Council

© Crown copyright and database rights 2025
 OS 0100060963. Aerial Photography ©
 UK Perspectives 2002 & © Getmapping 2005, 2009
 & 2014. © Getmapping Plc and Bluesky International
 Limited (2017 onwards)