

# Towards a new model of day opportunities

Consultation brochure  
Purbeck 2025



**A new way of delivering day opportunities in Dorset**



**Dorset**  
Council

Working together | ambitious for **Dorset**

# Contents

---

|   |    |
|---|----|
| Why we want to consult with you                             | 2  |
| What we are proposing                                       | 3  |
| All about the model   | 4  |
| Hubs, community activities (spokes) and specialist services | 5  |
| What a Hub could look like                                  | 6  |
| What a community activity (spoke) could look like           | 6  |
| What a specialist service could look like                   | 7  |
| Evenings and Weekends                                       | 7  |
| Purbeck   | 8  |
| Wareham (Purbeck)   | 8  |
| Swanage   | 9  |
| Wareham   | 9  |
| Paying for Day Opportunities                                | 10 |
| Consultation Period   | 10 |
| Share your thoughts   | 10 |



## Why we want to consult with you?

---

In 2021, and again in 2023, we asked people who use day services about their experiences.

You told us you would like a wider choice of local activities with more flexible options. You also told us that you wanted to be able to do activities during the evening and weekends.

The two rounds of engagement have helped us gain a real understanding of what people want from day opportunities and how they operate. As a result, we must change the way we deliver our day opportunities to give people wider choice of local activities with more flexible options.

We propose to introduce hubs across the county, where people can go to access information, make connections to everything that is going on in their local area and take part in some activities.

We will connect these hubs to a range of community activities (spokes) including specialist projects and services through to local libraries, community centres, cafes, pubs, and community groups,

The community activities (spokes) will focus on providing the type of activities you have told us you want, with more availability during evenings and weekend

You told us you wanted to feel safe, be supported by people you know and that carers need to be supported to take a break during the day, as well as have access to information, advice, and guidance. We think our hubs and spokes will be able to do this.

We plan to ensure there are specialist services available for those with the most complex needs. We want to be able to invest and modernise them.

Now that we have a proposed new way to deliver day opportunities, we want to consult with you on how it affects services across Dorset and how we will put it into practice. This is your opportunity to help us to shape the delivery of the service.

This brochure explains to you what a hub and spoke model is, how we will increase the range of community-based day opportunities and how we will better use the day service buildings that we currently have.

We have reviewed the use of our buildings and are proposing some changes. Our reasons for this are set out below and this is your opportunity to tell us what you think.

We are absolutely committed to ensuring that everyone is well-supported through these changes and will be working with people who provide day services in the county, to ensure that this can happen.

We know that this may cause some anxiety, however, you will be fully supported when considering our new offer and making choices about your future day opportunities.





## What we are proposing

---

### All about the model

Currently around 600 people attend a day opportunity paid for by the Council.

Over half of the people that attend day opportunities have their service delivered by Care Dorset in Council-owned buildings.

These buildings are large, and in need of updating. Activities are provided mostly within the buildings, with some options for trips out or connections to the local town.

Rather than thinking about day 'services', we want to think more about day 'opportunities'. We mean a wider range of activities, in different places, better connected and easy to plan and access, for those with support needs.

Under our plans, the day opportunities available in each community will better reflect the needs of local people. Opportunities may be delivered by local individuals, groups, organisations or public agencies.

Organisations, groups, and individuals delivering opportunities will be supported to feel confident in delivering services to Dorset residents who have additional needs, so that people can have access to everything our towns and communities can offer.

The proposed plan is to deliver day opportunities that encourage local organisations to work together and use all the venues, people, and groups within a community, as an alternative to the current focus on day services all delivered in one building.

Dorset is a big place; to make it easier to connect people and services we break it down into five localities. We want there to be at least one main hub per locality. Each hub will be the focus for connecting community activities (spokes) and specialist service provision in that area, all to better meet the needs of local people.

## What a hub could look like

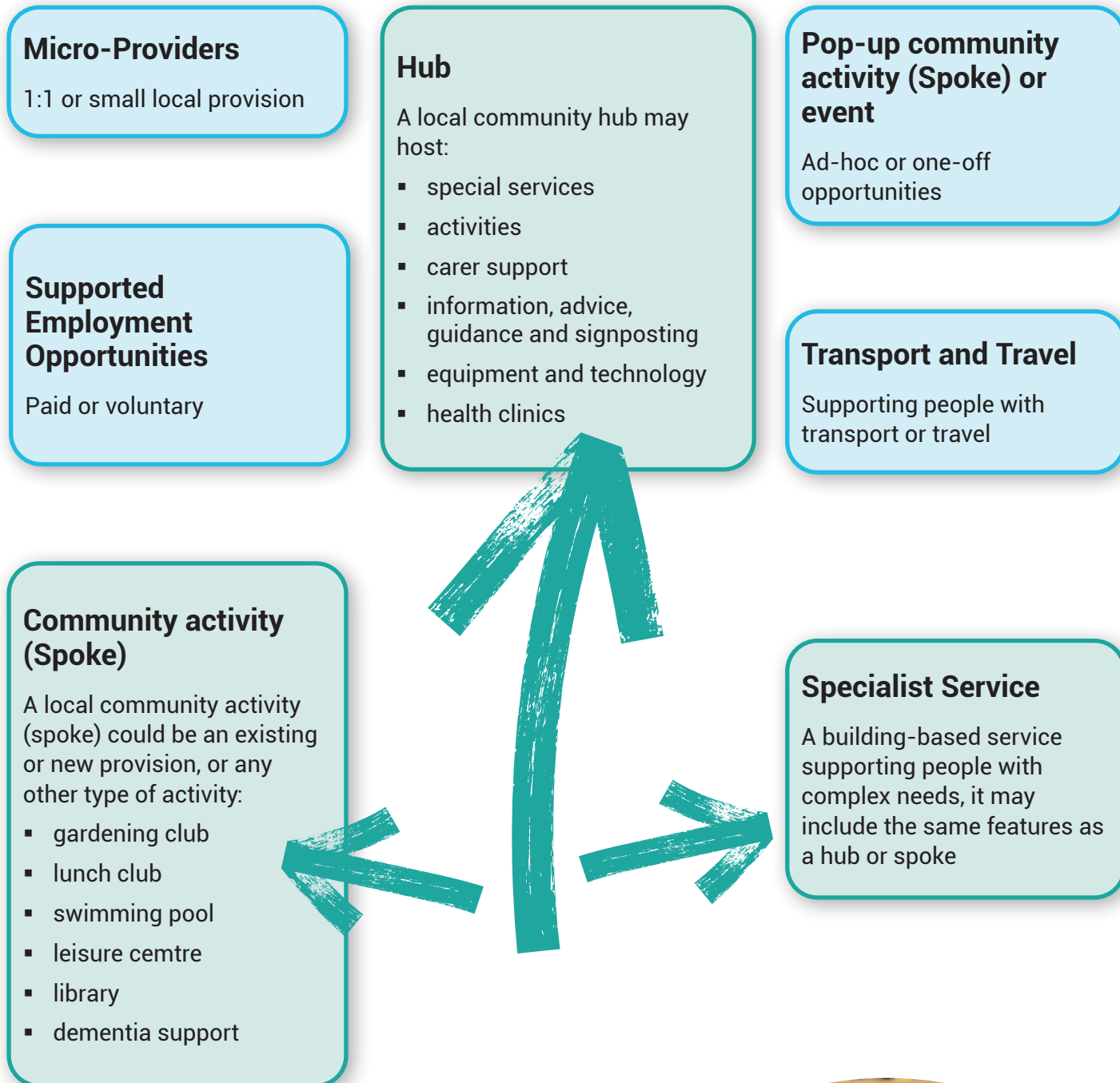
---

A hub is a place where activities may take place but, more importantly, people's access to day opportunities is supported. You can access information, advice and guidance and explore or take home the sorts of equipment that is available to help people live independently at home.

It is a place where connections are made, new opportunities identified, and further activities planned. It will make use of local venues, provide a base for opportunities, activities and reduce the need for unnecessary travel.

A hub will be larger than the spokes and will act as a central point, connecting community activities (spokes) and some specialist services. It will also be a place where rooms and spaces are available to other community organisations to run their projects and activities. A hub could arrange and provide training for the community activities (spokes) so that they can better support people in Dorset. It will also offer wellbeing support, information, advice and guidance, signposting, connecting people with local spokes, specialist services and activities.

# Hubs, community activities(spokes) and specialist services



## A hub could be:

- based in a local venue or community space
- a place where people can meet, connections are made
- a place to access services and organisations in one place
- a place where activities are on offer
- a meeting point for activities or outreach – such as when a group wants to meet to go out on a trip
- a central point for local information, advice, guidance
- somewhere that can signpost to local community activities (spokes), specialist services and other organisations
- a place to access supportive equipment and technology
- could be a provider of, or broker for Individual Service Funds (ISFs)  
\*see document enclosed for more information
- a location for health practitioners such as chiropractors, opticians, medical professionals to provide pop-up clinics or sessions as required
- a location for services to come and support you with drop ins, for example housing or any other organisations that could help

## A hub will be available in each of the 5 Dorset localities:

- North Dorset
- East Dorset
- Purbeck
- West Dorset
- Weymouth and Portland



## What a community activity (spoke) could look like

---

Community activities (spokes) are smaller than hubs.

Community activities (spokes) can be places where you attend a group to do an activity, and they can also be run by an individual.

Each local community may have many community activities (spokes), all offering different things to support a range of requirements for the people who live there.

You may have access to a community activity (spoke) as part of a package of care provided by the Council, but equally they will often be open to everyone to arrange their own attendance – depending on the type of activity or project.

### A community activity (spoke) could be a meeting place for dedicated activities:

- a place, group or person that delivers regular activities
- a place, group or person that delivers occasional activities
- a place, group or person that offers outreach support
- a meeting place for dedicated activities
- a local service to meet the needs of local people

The sorts of things that community activity (spokes) could provide is almost endless; opportunities may include:

- carers groups
- health and wellbeing activities
- employment support
- library services
- Information, advice, and guidance
- benefits and housing support
- lunch clubs
- arts and crafts

The development of local community activities (spokes) could help reduce the time you have to travel to attend a day opportunity. The number of community activities (spokes) available in a locality will not be limited.



## What a specialist service could look like

---

Some people need considerably more support for their daily activities than others. In these cases, specialist provision is absolutely vital. It recognises the need for well-trained people, delivering more complex support, specialist equipment and facilities.

These services are likely to be more focused in the buildings in which they are based, like traditional day opportunities that we have today. They are also likely to be registered with the Care Quality Commission (CQC) as care providers.

Specialist services will support the needs of those attending, for example, rooms/spaces for physiotherapy or speech and language sessions.

Even though it is most likely that specialist provision will take place in a fixed building base, we will want it to work closely with locality hubs to make the right connections into the community and to work in partnership with community activities (spokes).

A specialist service could be within a hub, or it could be a standalone community activity (spoke).

### Specialist provision could be:

- services for people that need more complex support
- a place that delivers activities
- a place where there is specialist equipment and facilities, for example hoists, hydrotherapy pools, sensory rooms, or specially adapted furniture
- a place that provides more intensive support
- operating from a specific, fixed location



## Evening & weekends

---

In the engagement you told us you would like a wider choice of local activities, more flexible options with availability during evening and weekends.

This proposed hub, spoke and specialist service model may offer opportunities in the evening and at weekends.





## Proposal for Purbeck Locality

---



## Purbeck

---

In Purbeck there are currently three day centres operated by Care Dorset.

- Purbeck Connect - Wareham
- Swanage Connect – Swanage (Located within The Focus Centre, Swanage)
- Wareham Plus - Wareham

We have reviewed how these buildings are utilised, as well as other local services, we have set out below our consultation proposals for day opportunities in the Purbeck locality in Dorset.

## Wareham (Purbeck)

---

We are proposing that the Purbeck day opportunity, also known as Purbeck Connect will become the hub for Purbeck.

The Purbeck Hub would:

- Provide space to other people, groups or organisations offering regular activities, for example:
  - lunch clubs
  - health clinics
  - Classes
- Provide space for other people, groups or organisations offering occasional activities or events.

If you currently attend Purbeck Connect the proposed model would provide you with the following options:

- You can continue to attend Purbeck Connect which will become the Purbeck Hub.
- You can change to a community activity (spoke) or a range of services in the local community that offer activities to meet your specific needs and interests.
- You can choose to attend a mixture of community activities (spokes) and attend the Purbeck Hub.

Care Dorset currently operate Purbeck Connect, and we would expect them to continue to operate the Purbeck Hub for the immediate future. We plan to work with community and other organisations in and around Purbeck to develop what this long-term offer looks like.

## Swanage

---

Dorset Council transferred the building previously known as Swanage Connect to The Purbeck and Swanage Development Trust (PSDT) in 2023.

The day centre building now known as The Focus Centre forms part of the Wellbeing Swanage Hub operated by The Purbeck and Swanage Development Trust (PSDT). Care Dorset currently provide Swanage Connect at the Focus Centre, however, they have plans to withdraw this service in the future. We will work with The Purbeck and Swanage Development Trust to develop these community activities in addition to existing places, groups and individuals that offer activities to meet the needs of local people.

### If you currently attend Swanage Connect the proposed model would provide you with the following options:

- You can change to activities run by other providers from the Focus Centre (Wellbeing Swanage hub).
- You could change to the proposed Purbeck Hub.
- You can change to a community activity (spoke) or a range of services in the local community that offer activities to meet your specific needs and interests.
- You can change to a specialist service if you need more complex support.
- You can choose to attend a mixture of community activities (spokes) and attend the Purbeck Hub.

## Wareham

---

The current building used by Care Dorset, known as Wareham Plus, is not suitable. The building is connected to Anglebury Court residential home and is under the local social care office. The day centre is situated in a residential area, there is very little parking, which means some people have difficulty with accessibility.

Currently, we have a contract for this service with Care Dorset. We want to end that contract and focus on the right support for people in their local area. If we do this, it may mean that this service closes in its current location and form.

We are proposing to increase community activities (spokes) in Wareham and the surrounding areas. There are partners in the local community that can offer opportunities tailored to meet specific interests or requirements. We will work to develop these community activities in addition to existing places, groups and individuals that offer activities to meet the needs of local people.

We would support Individuals to transfer to a new local community activity (spoke) or specialist service or take the option of transferring to the new Purbeck Hub (currently Purbeck Connect).

### If you currently attend Wareham Plus, the proposed model will provide you with the following options:

- You can change to a community activity (spoke) or a range of services in the local community that offer activities to meet your specific needs and interests.

- You can change to a specialist service if you need more complex support.
- You can change to the proposed Purbeck Hub (currently Purbeck Connect)
- You can choose to attend a mixture of community activities (spokes) and attend the Purbeck Hub.

## Paying for day opportunities

---

If you have been assessed as being eligible to receive support from Dorset Council to meet your social care outcomes there are several ways in which you can choose and pay for your day opportunity.

- Your day opportunity can be commissioned on your behalf by the Council.
- You can decide to take a Direct Payment (DP).
- You can decide to take an Individual Service Fund (ISF).
- You can access a day opportunity as an Individual who arranges their own funding.

## Direct Payments and ISF's

---

You may be eligible and choose to take a Direct Payment (DP) or Individual Service Fund (ISF) from the Council to pay for your day opportunity. Direct payments and ISFs provide you with the freedom to buy a day opportunity of choice, which can include local clubs, groups, cinema, gym, or one-off activities.

\*(please see the sheet enclosed for more details).

## Consultation period

---

We want your feedback on the proposed model for day opportunities in Dorset.

The consultation will start on **11th March 2025** for 90 days, closing on **9th June 2025**.

Brochures for the other locality areas are available on request.



## Share your thoughts

---

It is of vital importance to the Council that the service delivers what the people that use them need and therefore we would like your view on these proposals. You can share your views about the proposed changes by completing a short survey.

Online at <https://consultation.dorsetcouncil.gov.uk/c-e/dayopps>

Scan the QR code to complete online



Print a copy and return to us by post at:

Towards a new model of day opportunities  
Adults Commissioning  
Adults & Housing Directorate  
County Hall  
Colliton Park  
Dorchester  
DT1 1XJ

