



# **Portland Energy Recovery Facility**

## **Appeal Against the Refusal of Planning Permission by Dorset Council**

**PINS Ref: APP/D1265/W/23/3327692**  
**LPA Ref: WP/20/00692/DCC**

**Landscape and Visual Effects**  
**PPF5b: Appendices of Jon Mason**

**Appendix JM4: Figures**

Prepared for



Powerfuel Portland Limited

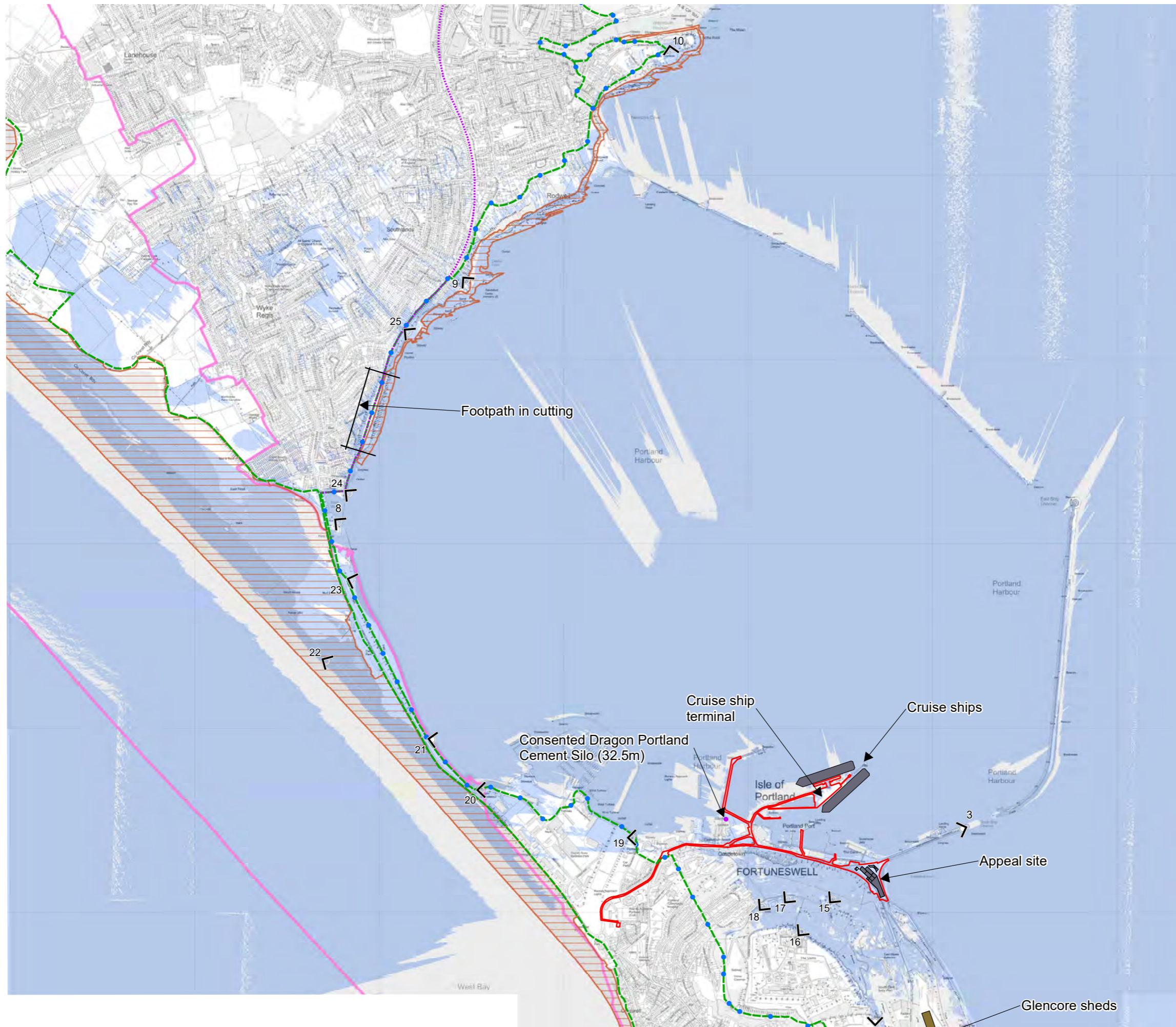
November 2023  
3460-01-Proof-02



## Figure List

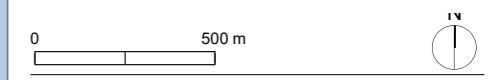
- Figure JM1** Zone of Theoretical Visibility of the proposed stack and viewpoint locations
- Figure JM2** Zone of Theoretical Visibility of the proposed stack and viewpoint locations zoom extract
- Figure JM3** Zone of Theoretical Visibility of the proposed building and viewpoint locations
- Figure JM4** Zone of Theoretical Visibility of the proposed building and viewpoint locations zoom extract
  
- Figure JM5** Viewpoint 9 winter
- Figure JM6** Photomontage of viewpoint 9 winter
- Figure JM7** Viewpoint 15 winter
- Figure JM8** Photomontage of viewpoint 15 winter
- Figure JM9** Viewpoint 16 winter
- Figure JM10** Photomontage of viewpoint 16 winter
- Figure JM11** Viewpoint 17 winter
- Figure JM12** Photomontage of viewpoint 17 winter
- Figure JM13** Viewpoint 18 winter
- Figure JM14** Photomontage of viewpoint 18 winter
- Figure JM15** Viewpoint 19 winter
- Figure JM16** Photomontage of viewpoint 19 winter
- Figure JM17** Viewpoint 20 winter
- Figure JM18** Photomontage of viewpoint 20 winter
- Figure JM19** Viewpoint 21 winter
- Figure JM20** Photomontage of viewpoint 21 winter
- Figure JM21** Viewpoint 22 winter
- Figure JM22** Photomontage of viewpoint 22 winter
- Figure JM23** Viewpoint 23 winter
- Figure JM24** Photomontage of viewpoint 23 winter
- Figure JM25** Viewpoint 24 winter
- Figure JM26** Photomontage of viewpoint 24 winter
- Figure JM27** Viewpoint 25 winter
- Figure JM28** Photomontage of viewpoint 25 winter



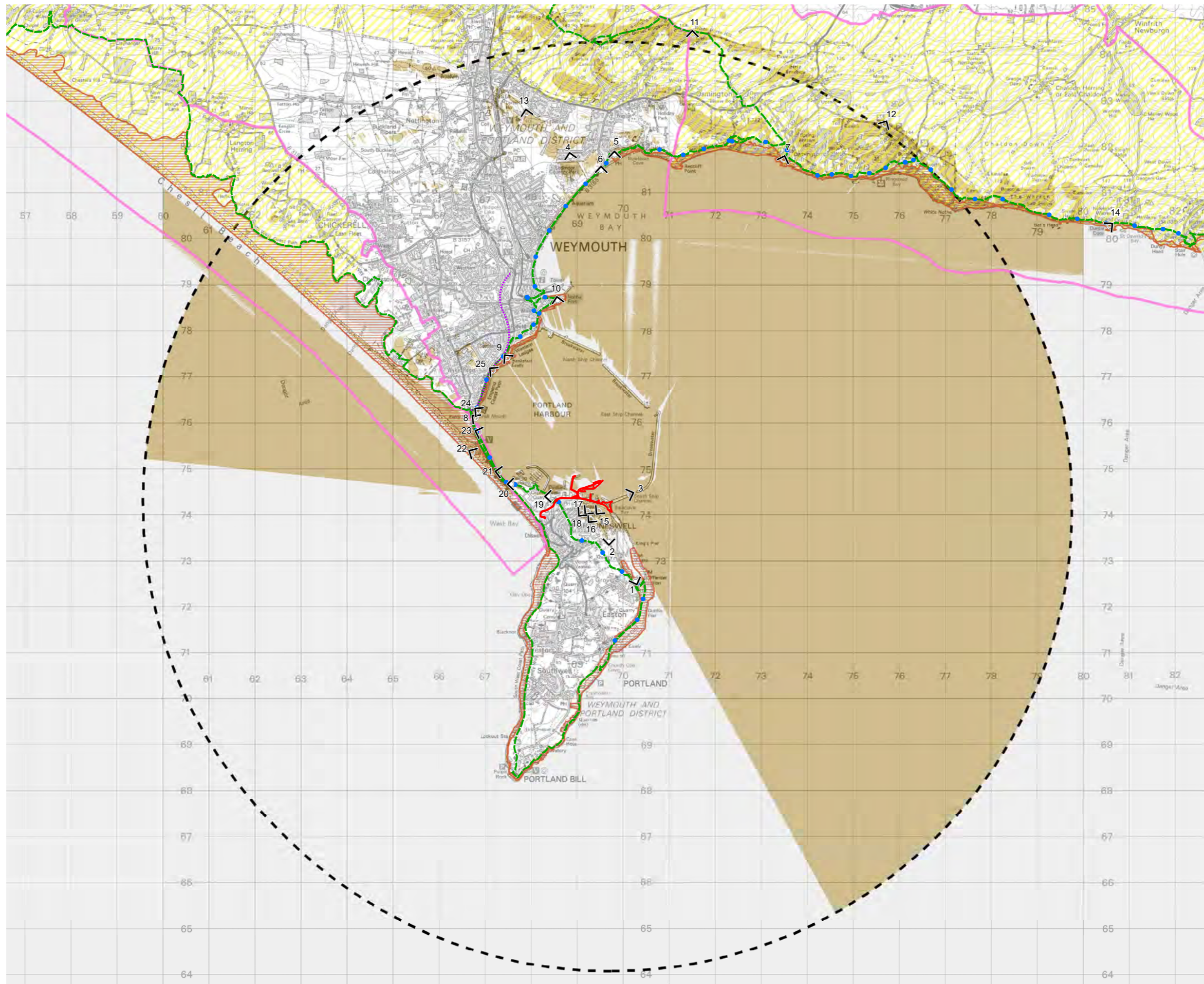


- Site boundary
- ↙ Viewpoint locations
- • England coast path
- ⋯ Rodwell Trail
- - - South West Coast Path
- World Heritage Site
- Heritage coast
- Stack ZTV

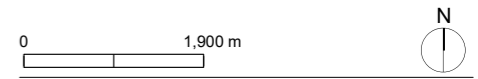
**Note:**  
 The cruise ships shown represent the MSC Grandiosa and MSC Virtuosa, both of which were in harbour on 30th September 2023. The dimensions of the MSC Virtuosa is over 330m long and 65m high, with a draught of 8.4m, giving a visible height of 56.6m



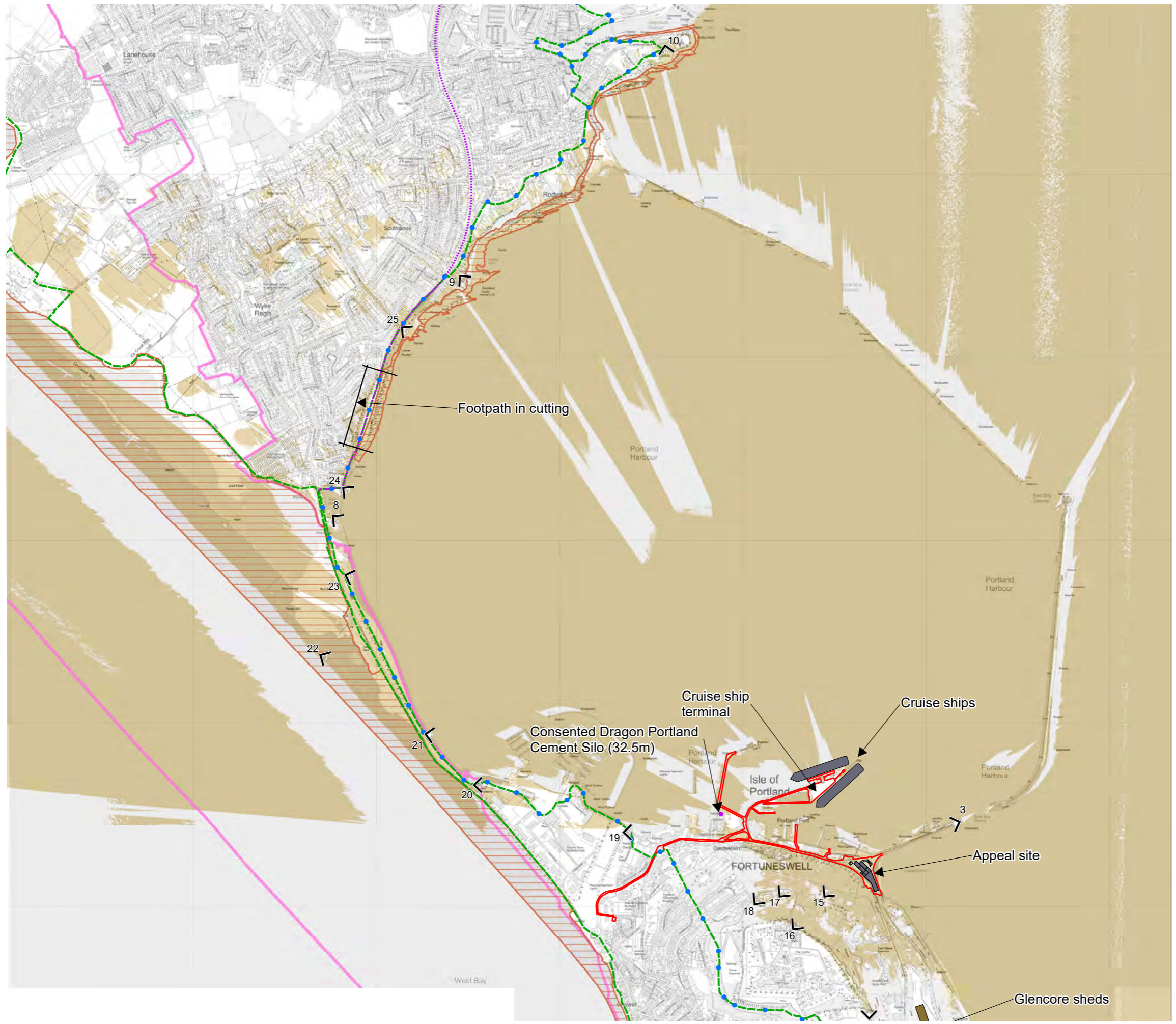
Based upon the 2023 Ordnance Survey 1:10,000 colour raster map with the permission of the Ordnance Survey on behalf of HMSO, © Crown copyright Licence No. AC0000849896. Copyright torandco limited, 2023



- Site boundary
- 10km study area
- England coast path
- ⋯ Rodwell Trail
- South West Coast Path
- ◀ Viewpoint locations
- Heritage coast
- World Heritage Site
- Area of Outstanding Natural Beauty
- Building ZTV

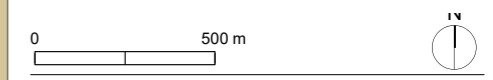


Based upon the 2023 Ordnance Survey 1:50,000 colour raster map with the permission of the Ordnance Survey on behalf of HMSO, © Crown copyright Licence No. AC0000849896.  
Copyright torandoo limited, 2023



- Site boundary
- ◀ Viewpoint locations
- • England coast path
- ⋯ Rodwell Trail
- - - South West Coast Path
- World Heritage Site
- Heritage coast
- Building ZTV

**Note:**  
 The cruise ships shown represent the MSC Grandiosa and MSC Virtuosa, both of which were in harbour on 30th September 2023. The dimensions of the MSC Virtuosa is over 330m long and 65m high, with a draught of 8.4m, giving a visible height of 56.6m



Based upon the 2023 Ordnance Survey 1:10,000 colour raster map with the permission of the Ordnance Survey on behalf of HMSO, © Crown copyright Licence No. AC0000849896. Copyright torandco limited, 2023



Taken from Sandsfoot Castle  
 Visualisation type 1. To be viewed at a comfortable arm's length and printed at A1



Figure JM5  
 Viewpoint 9 winter



Consented Dragon Portland Cement Silo (32.5m)

Taken from Sandsfoot Castle  
Visualisation type 4. To be viewed at a comfortable arm's length and printed at A1



Figure JM6  
Photomontage of viewpoint 9 winter





Taken from East Weare Battery  
 Visualisation type 1. To be viewed at a comfortable arm's length and printed at A1





Taken from East Weare Battery  
Visualisation type 4. To be viewed at a comfortable arm's length and printed at A1



Figure JM8  
Photowire of viewpoint 15 winter



Taken from the Jailhouse Cafe Garden  
 Visualisation type 1. To be viewed at a comfortable arm's length and printed at A1



Figure JM9  
 Viewpoint 16 winter



Taken from the Jailhouse Cafe Garden  
 Visualisation type 4. To be viewed at a comfortable arm's length and printed at A1



Figure JM10  
 Photomontage of viewpoint 16 winter



Taken from the eastern end of the Royal Naval Cemetery  
 Visualisation type 1. To be viewed at a comfortable arm's length and printed at A1



Figure JM11  
 Viewpoint 17 winter



Taken from the eastern end of the Royal Naval Cemetery  
 Visualisation type 4. To be viewed at a comfortable arm's length and printed at A1



Figure JM12  
 Photomontage of viewpoint 17 winter



Taken from the Royal Naval Cemetery  
 Visualisation type 1. To be viewed at a comfortable arm's length and printed at A1



Figure JM13  
 Viewpoint 18 winter



Taken from the Royal Naval Cemetery  
 Visualisation type 4. To be viewed at a comfortable arm's length and printed at A1



Figure JM14  
 Photomontage of viewpoint 18 winter





Taken from raised viewpoint area adjacent to Portland Castle  
 Visualisation type 1. To be viewed at a comfortable arm's length and printed at A1



Figure JM15  
 Viewpoint 19 winter

Consented Dragon Portland  
Cement Silo (32.5m)



Taken from raised viewpoint area adjacent to Portland Castle  
Visualisation type 4. To be viewed at a comfortable arm's length and printed at A1



Figure JM16  
Photomontage of viewpoint 19 winter



Taken from Hamm Roundabout, west of Portland Marina  
 Visualisation type 1. To be viewed at a comfortable arm's length and printed at A1





Taken from Hamm Roundabout, west of Portland Marina  
 Visualisation type 4. To be viewed at a comfortable arm's length and printed at A1



Figure JM18  
 Photomontage of viewpoint 20 winter



Area shown as photomontage

Portland Harbour Waters

Portland Marina

Approximate extent of proposals

Prince Andrew House

HMP The Verne

Ocean Views Apartments

Fortuneswell

South West Coast Path

Portland Beach Rd A354

Chesil Beach

Taken from the South West Coast Path adjacent to Portland Beach Road  
 Visualisation type 1. To be viewed at a comfortable arm's length and printed at A1



Figure JM19  
 Viewpoint 21 winter



Consented Dragon Portland  
Cement Silo (32.5m)

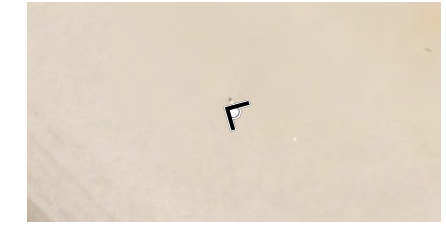
Taken from the South West Coast Path adjacent to Portland Beach Road  
Visualisation type 4. To be viewed at a comfortable arm's length and printed at A1



Figure JM20  
Photomontage of viewpoint 21 winter



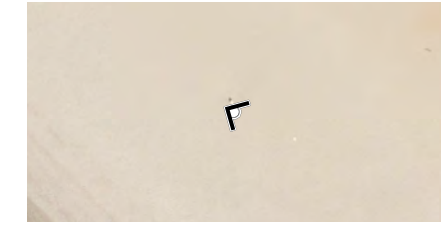
Taken from Chesil Beach at the trig point  
 Visualisation type 1. To be viewed at a comfortable arm's length and printed at A1



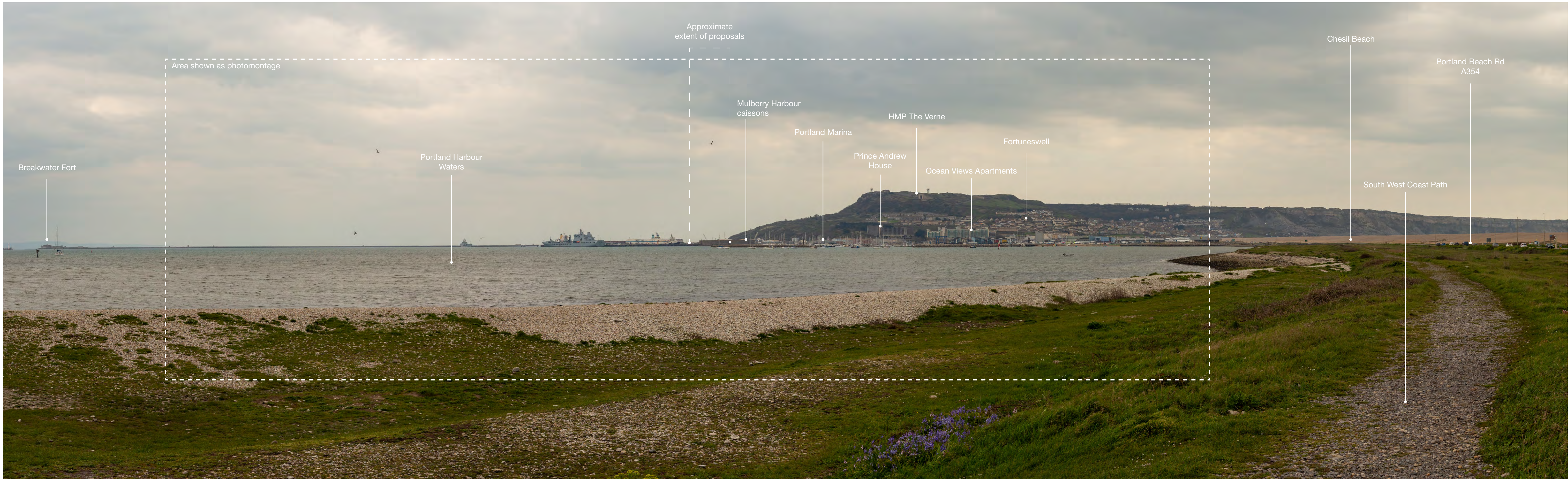


Consented Dragon Portland  
Cement Silo (32.5m)

Taken from Chesil Beach at the trig point  
Visualisation type 4. To be viewed at a comfortable arm's length and printed at A1







Taken from the South West Coast Path, south of Ferry Bridge Marina  
 Visualisation type 1. To be viewed at a comfortable arm's length and printed at A1





Consented Dragon Portland  
Cement Silo (32.5m)

Taken from the South West Coast Path, south of Ferry Bridge Marina  
Visualisation type 4. To be viewed at a comfortable arm's length and printed at A1





Taken from the south west end of the Rodwell Trail  
 Visualisation type 1. To be viewed at a comfortable arm's length and printed at A1



Figure JM25  
 Viewpoint 24 winter

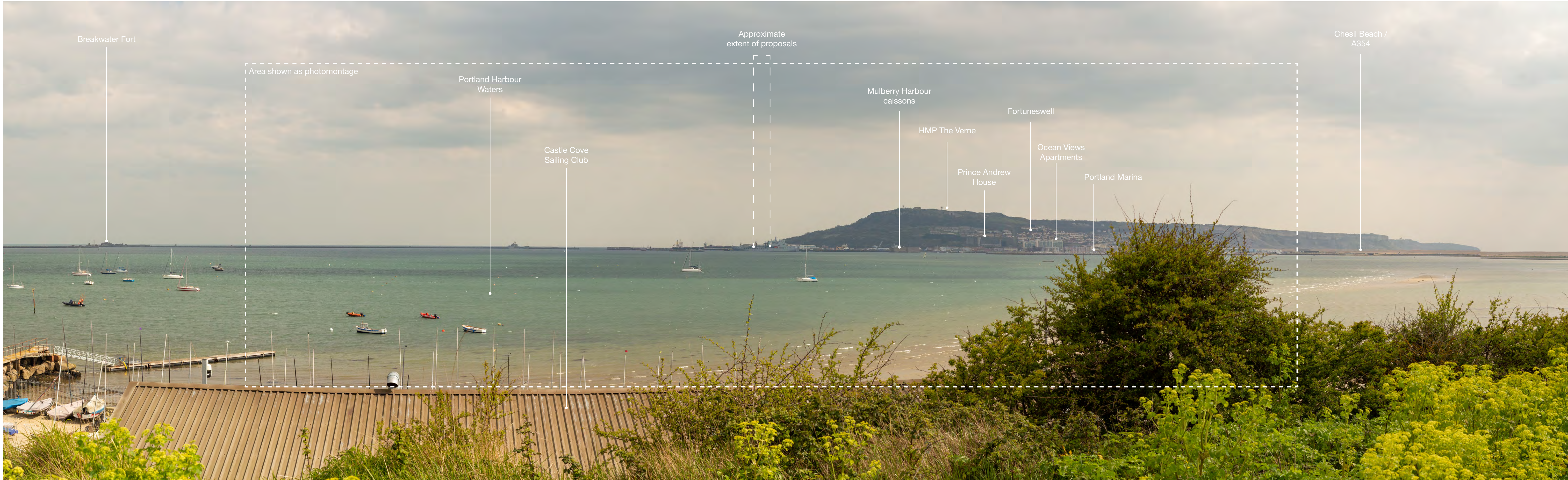


Consented Dragon Portland  
Cement Silo (32.5m)

Taken from the south west end of the Rodwell Trail  
Visualisation type 4. To be viewed at a comfortable arm's length and printed at A1



Figure JM26  
Photomontage of viewpoint 24 winter



Taken from the Rodwell Trail, north west of the Castle Cove Sailing Club  
 Visualisation type 1. To be viewed at a comfortable arm's length and printed at A1





Consented Dragon Portland  
Cement Silo (32.5m)

Taken from the Rodwell Trail, north west of the Castle Cove Sailing Club  
Visualisation type 4. To be viewed at a comfortable arm's length and printed at A1



Figure JM28  
Photomontage of viewpoint 25 winter